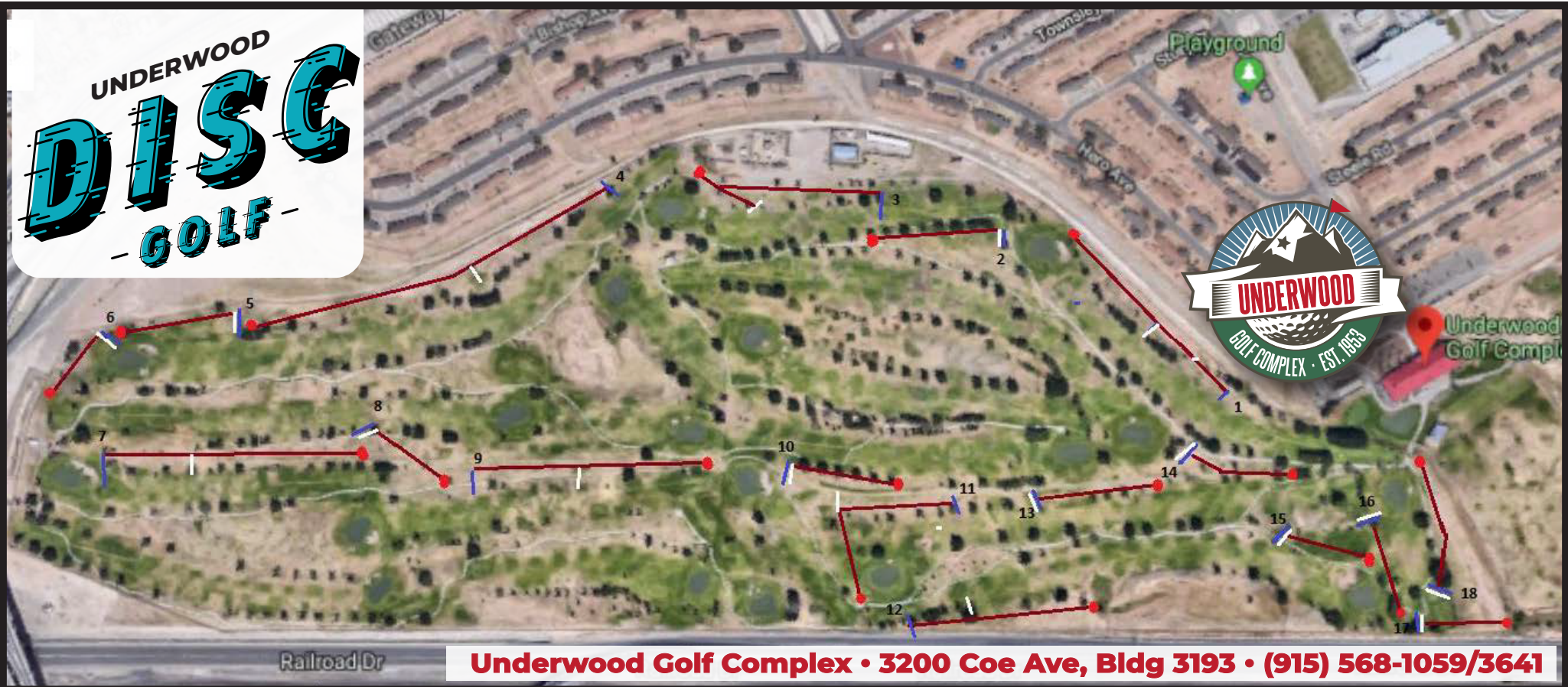


# UNDERWOOD DISC -GOLF-



Railroad Dr

**Underwood Golf Complex • 3200 Coe Ave, Bldg 3193 • (915) 568-1059/3641**

NAME	1	2	3	4	5	6	7	8	9	10	11	12	13	14	15	16	17	18



bliss.armymwr.com

# DISC GOLF



## Acronyms:

**OB- Out of Bounds** • **IB- In Bounds** • **MD- Mando** • **DZ- Drop Zone**

- All MD's are arrows and all DZ's are marked with a DZ sign.
- It's a group effort to make a call when questioning who is OB or IB.
- If you need to take a provisional shot, do so if you can't tell from the tee and make the call when you move forward.

## Blue Course

- Hole 1:** Par 4, 609 FT tree line left OB (yellow rope), fence right OB...White Tee is by the biggest tree in the fairway.
- Hole 2:** Par 3, 300FT, all sidewalk OB.
- Hole 3:** Par 4, 605 FT, left and right tree lines OB (yellow rope), Double MD down the fairway 150ft from the basket, after Double MD everything is IB, miss the Double MD & DZ is marked by the sign on the left tree...White tee is 120 feet back from the Double MD on left tree line.
- Hole 4:** Par 5, 1132FT, left tree line OB (yellow rope), right fence OB, tree in the middle of the the fairway is the White Tee.
- Hole 5:** Par 3, 364FT, fence right OB, Ball golf green OB, fringe is safe take a meter of the green and place lie, sand trap hazard play it where it lies but add 1 stroke.
- Hole 6:** Par 3, 253FT, fence right OB, Ball golf tee pad OB: place lie a meter off the tee grass.
- Hole 7:** Par 4, 814FT, Double MD going into right and left tree line off tee box, DZ marked at 1st tree on the right tree line, right and left tree line OB (yellow rope). White Tee on the right side of tree line in the middle of the fairway.
- Hole 8:** Par 3, 285FT, MD right of the tree marked, sidewalk behind the basket is OB.
- Hole 9:** Par 4, 770FT, sidewalk left and right OB.
- Hole 10:** Par 3, 348FT, tree line left OB.
- Hole 11:** Par 4, 572FT, dog leg left, placement shot up to Double Mando trees then throw left up to the basket. DZ and White Tee is at the small tree. All side walk OB.
- Hole 12:** Par 4, 586FT, Mando left of skinny tree by the fence. Fence right and in front of the cage is OB. Throw wisely. White Tee is under the big tree 80 feet past the blue tee.
- Hole 13:** Par 3, 332FT, tree line left is OB (can still throw a shot over the tree's and land in bounds, if you do not come in then go to the DZ at the 1st tree in the tree line), on the road to the left and beyond is OB, Mando left at the last tree on the tree line before the cage.
- Hole 14:** Par 3, 343 FT, Double Mando left first then right on the tree's 65 feet past the tee pad, sidewalk left and right OB.
- Hole 15:** Par3, 275FT, side walk right OB.
- Hole 16:** Par 3, 277FT, mado left on the tree after the side walk to protect the ball golf green, there is a tee pad left of the cage which is OB..take a meter in, fence behind the cage is OB. Be safe.
- Hole 17:** Par 3, 232FT, fence right is OB, driving range is OB, Ball golf tee pad is OB.
- Hole18:** Par 3, 369 FT, side walk left is OB and fence for driving range is OB, bridge is OB, if ditch has water play it casual and take relief.